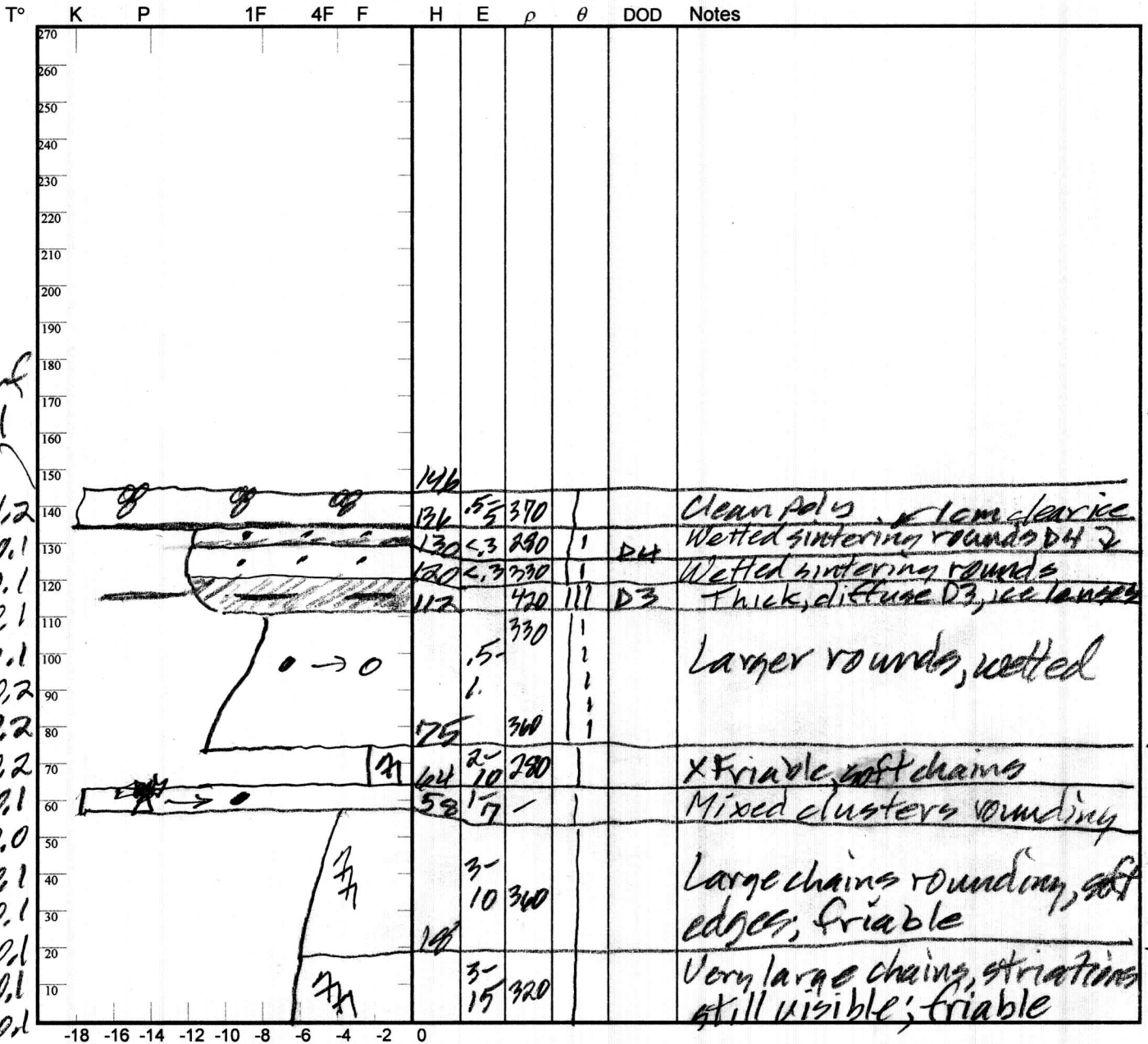


Observers: CL+AT Center for Snow and Avalanche Studies Profile # 14
 Time: 0835 MST Snowpack Profile Date: 4/22/14
 Location: SASP Elev. 12,130' Aspect: NE Boot Pen: 1 cm \angle : 3°
 Air T: 12 °C Sky: D Precip: Nil Wind: Nil Prior Pit: # 12; 4/20/14
 Total Snowpack SWE: 503 mm H₂O Notes: H₂O = 1.41 m; $\bar{\rho} = 357$ kg/m³



7
 SWE
 59
 87
 69
 77
 18
 72
 60
 61

Surf
 -0.1
 -1.2
 -0.1
 -0.1
 -0.1
 -0.1
 -0.2
 -0.2
 -0.2
 -0.1
 0.0
 -0.1
 -0.1
 -0.1
 -0.1
 -0.1

Potential Slab			Weak Layer & Bed Surface						
Ref	$H_{2O_{Nor}} \div H_{Nor} = \rho_{kg}$	$\sin \angle \times H_{Nor} \times \rho \times 9.8 = \tau_{Slab}$	F	E	T _{wl}	S	C	RB	Shear Quality
A	mm ÷ m =	X X X 9.8 =							
B	mm ÷ m =	X X X 9.8 =							

Notes: