

Observers: JD/BA **CODOS Snowpack Profile** Date: 3/18 / 2022  
 Location: SASP Elev. 11,060' Aspect: NE Boot Pen: 60 cm  $\angle$ : 3° Time: 1400 MDT  
 Prior Obs: 2/27/2022 Air T: -11 °C Sky: 0 Precip: nil Wind: calm Notes: \_\_\_\_\_

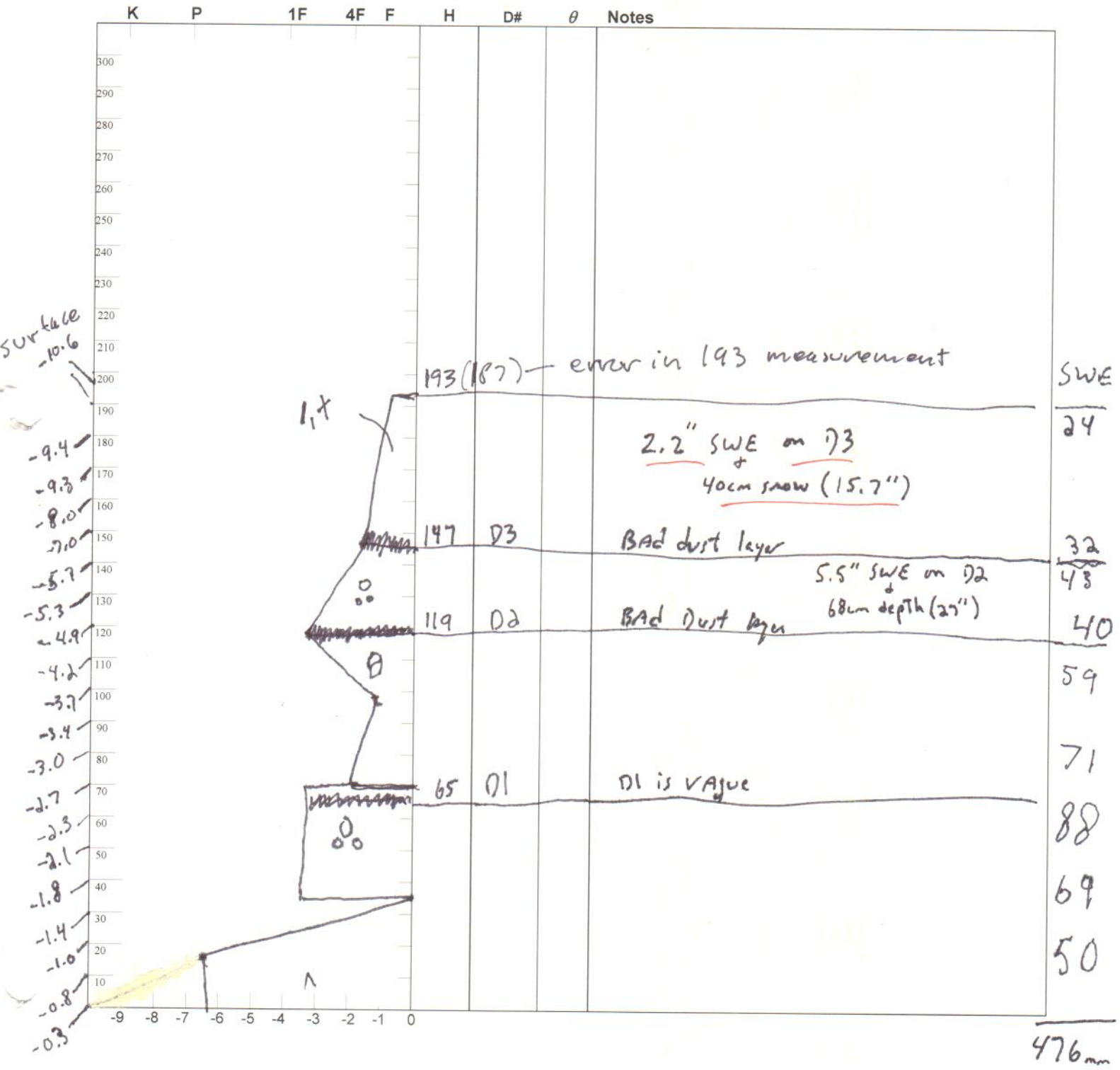
Normal is 1.85 meters

DI is vague and not easily recognizable

SWE = 476mm (18.7") depth 1.85m

cold! + sunny

$\rho = 254.5 \text{ kg/m}^3$



Observers: jad

### CODOS Snowpack Profile

Date: 3 / 12 / 22

Location: Spring Cr Elev. 10,400' Aspect: NE Boot Pen: 40 cm  $\angle$ : 5° Time: 1600 MDT

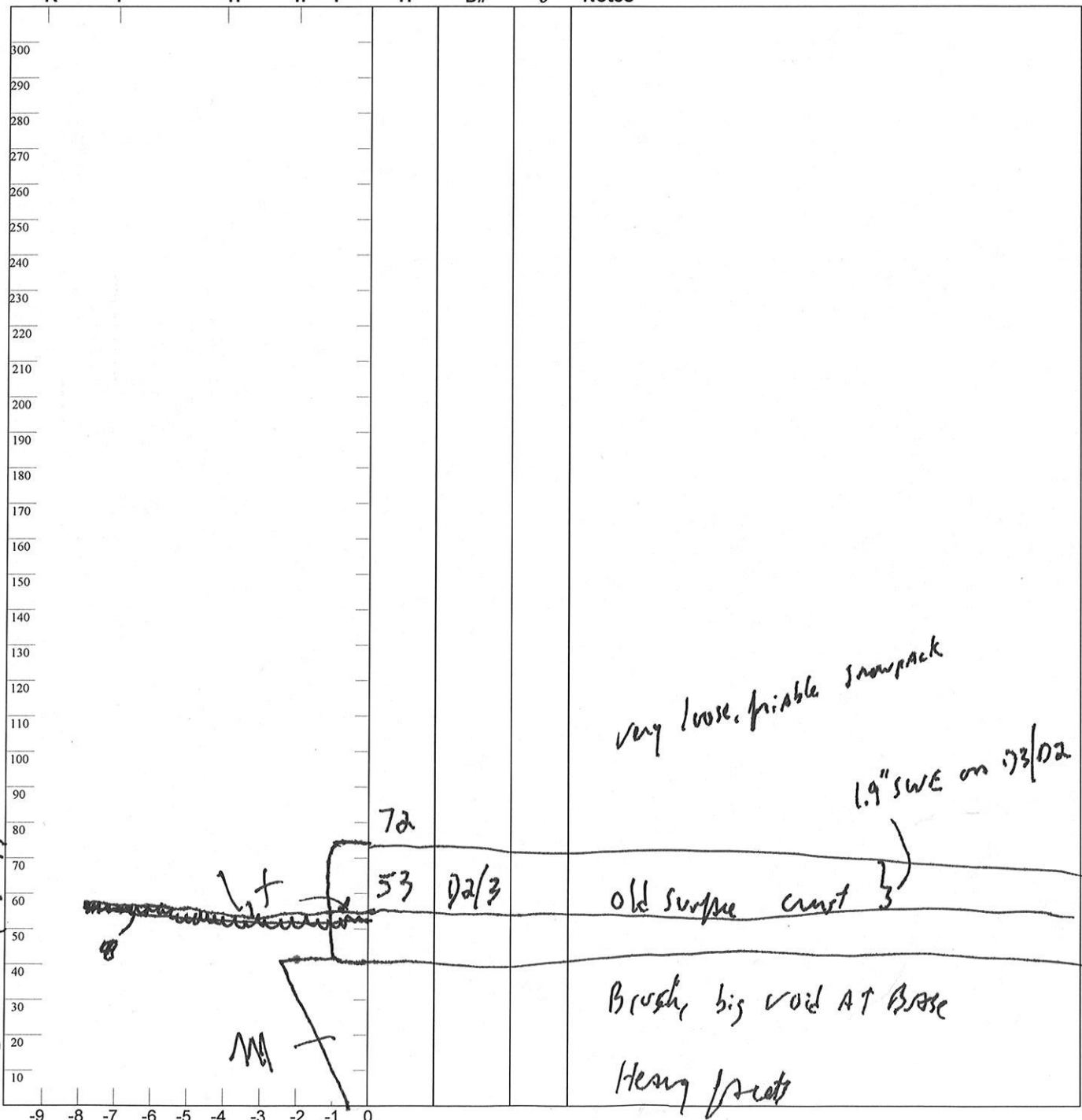
Prior Obs: 1/1 Air T:     °C Sky: ☉ Precip: nil Wind: calm Notes:     

Dust observed

SWE = 122 mm (4.8")  $\rho = 167 \text{ kg/m}^3$

slope  $\theta = 0.73 \text{ m}$

K P 1F 4F F H D#  $\theta$  Notes



-6.9  
 -4.6  
 -6.3  
 -2.0  
 -6.6  
 -4.2  
 -4.0

SWE  
 4.8  
 3.0  
 4.4

122 mm

Observers: ged

# CODOS Snowpack Profile

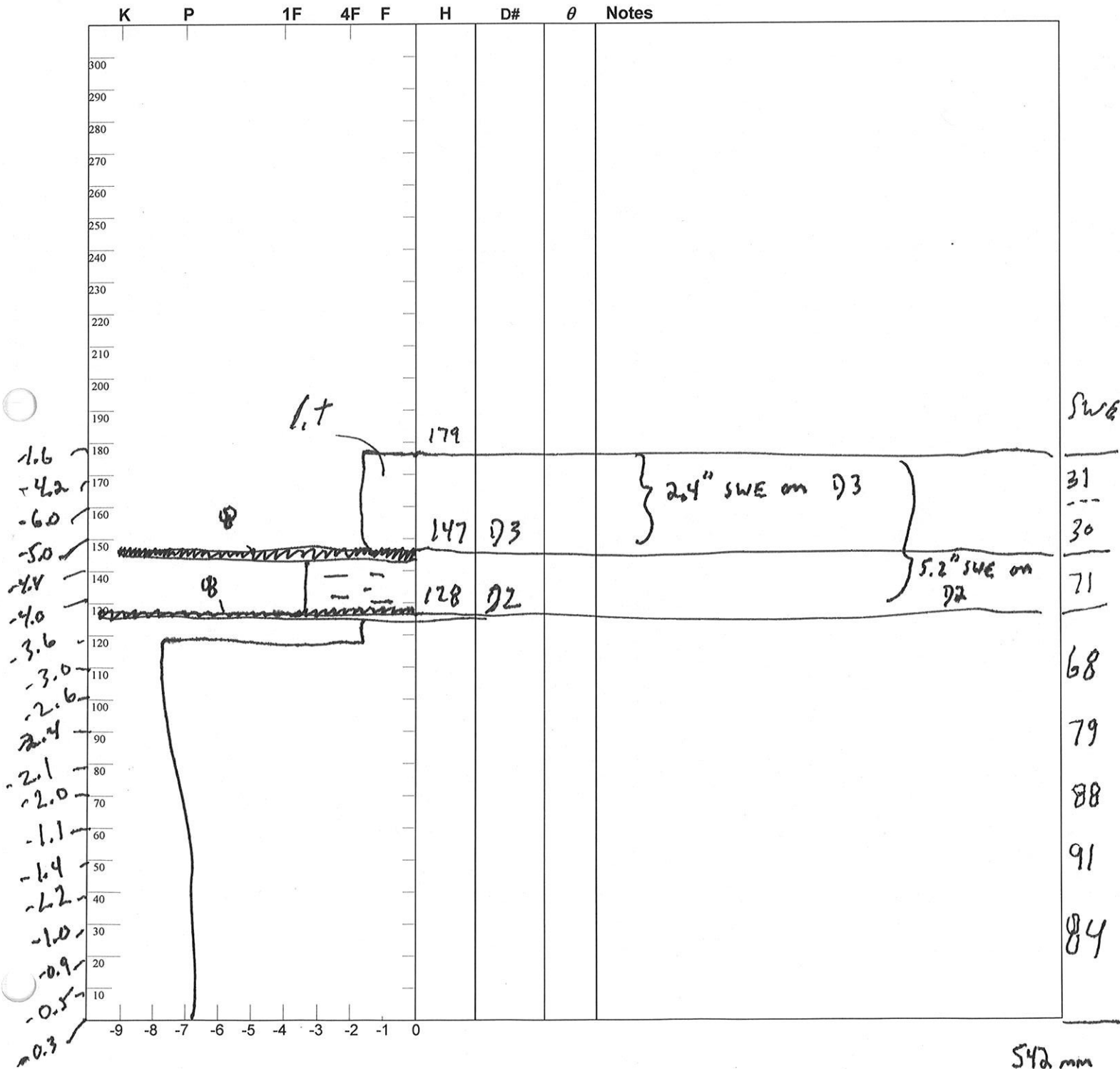
Date: 3/13/22

Location: Grand Mesa Elev. 10,630' Aspect: NNE Boot Pen: 60 cm  $\angle$ : 2 ° Time: 1300 MDT

Prior Obs:            Air T:        °C Sky: ☉ Precip: nil Wind: mod Notes:           

*Just observed*

SWE = 542 mm (21.4")  $\rho = 299 \text{ kg/m}^3$  slope  $\gamma = 1.81 \text{ m}$



Observers: ged

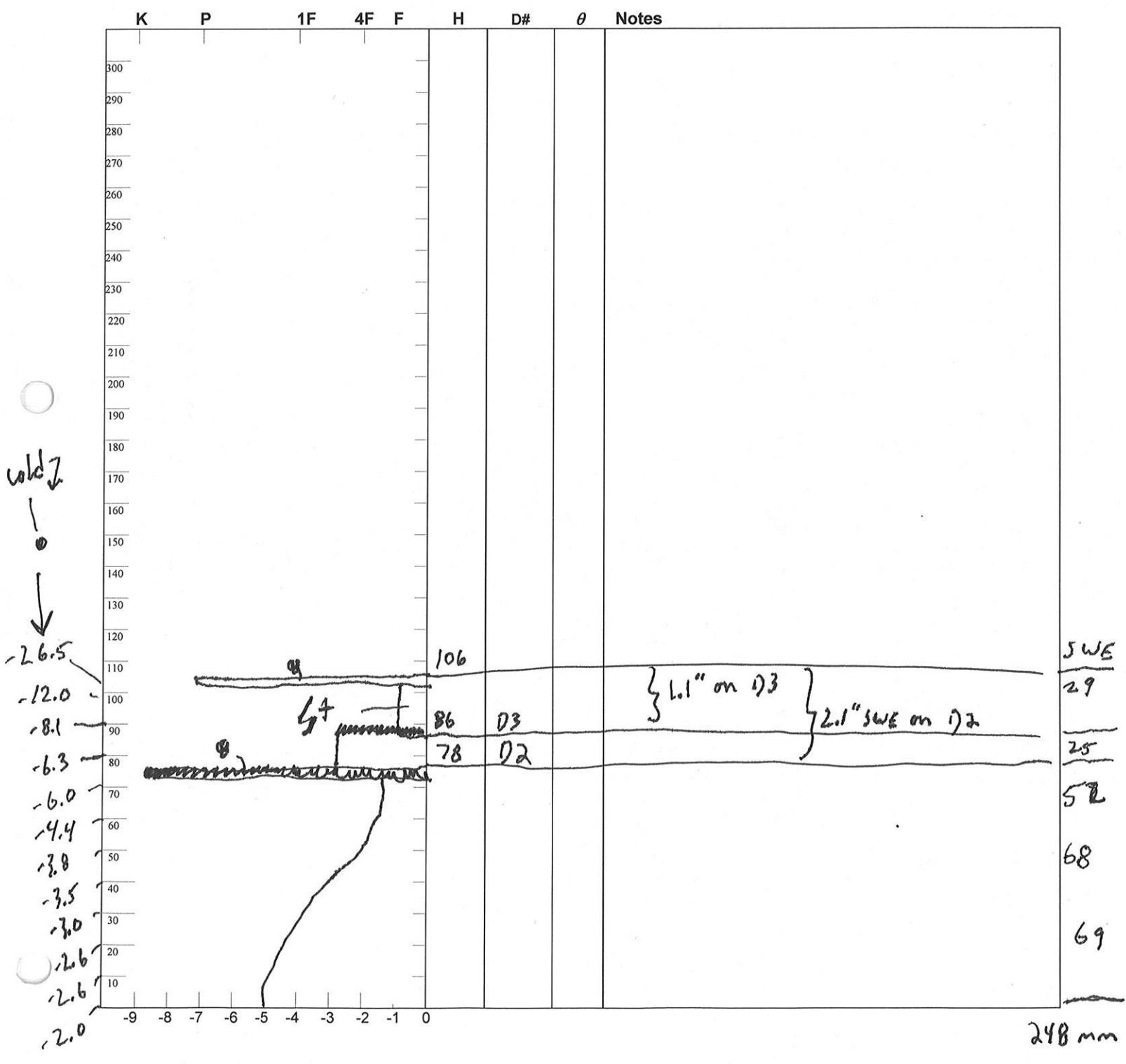
### CODOS Snowpack Profile

Date: 3 / 13 / 22

Location: Park Core Elev. 9,600' Aspect: NNE Boot Pen: 75 cm  $\angle$ : 10° Time: 9:00 MDT

Prior Obs: 1/1 Air T:     °C Sky: ☁ Precip: nil Wind: calm Notes:     

Slope  $\sigma = 1.06$  m SWE = 248 mm (9.8")  $\rho_s = 234$  kg/m<sup>3</sup>



Observers: jed

### CODOS Snowpack Profile

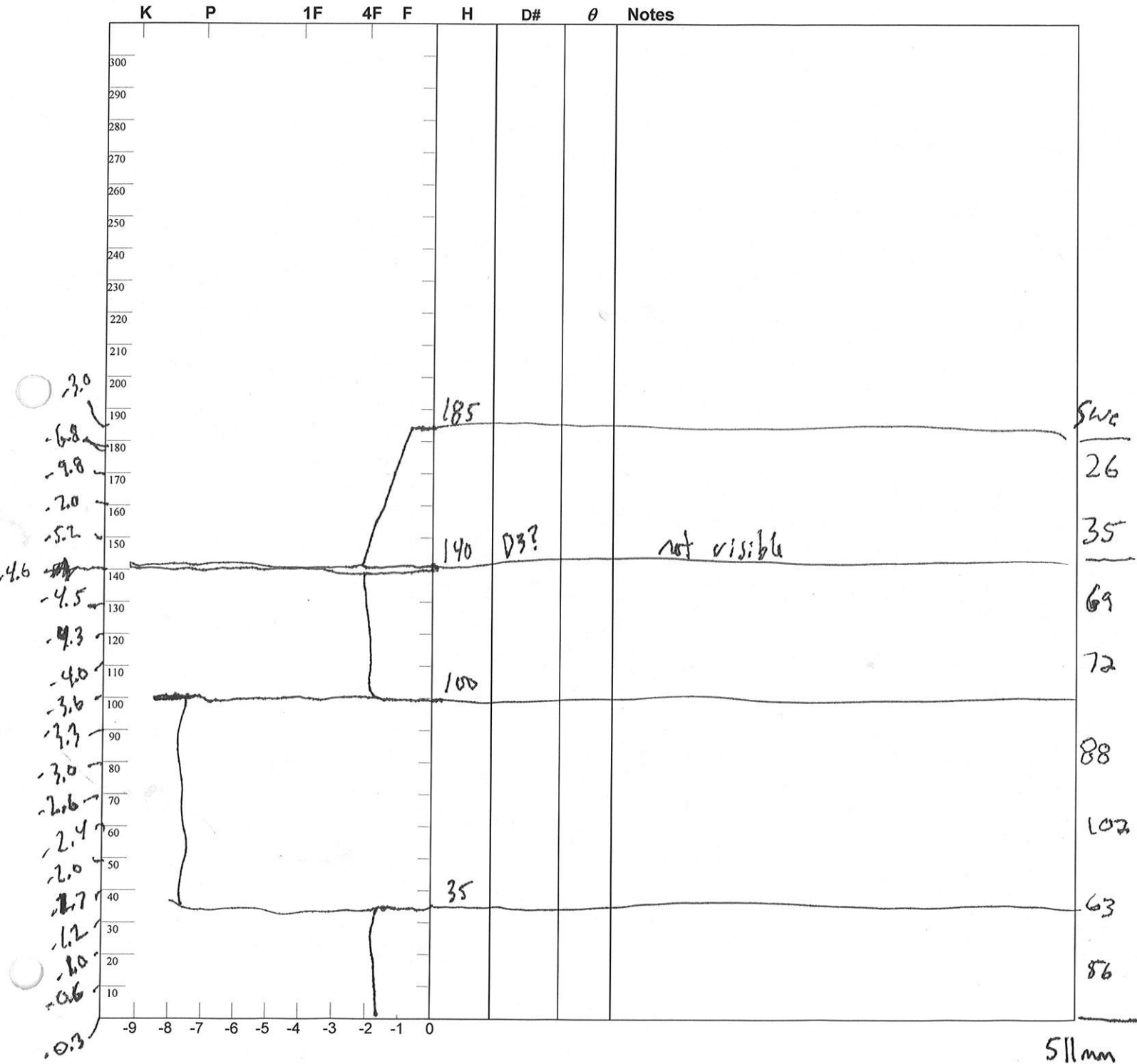
Date: 3/15/22

Location: Rabbit Ears Elev. 9,400' Aspect: NNW Boot Pen: 65 cm  $\angle$ : 3 ° Time: 1100 MDT

Prior Obs:                      Air T:        °C Sky: 0 Precip: nil Wind: calm Notes:                     

No dust observed

Slope = 1.85m  $\rho$  = 276 kg/m<sup>3</sup> SWE = 511 mm (20.1")



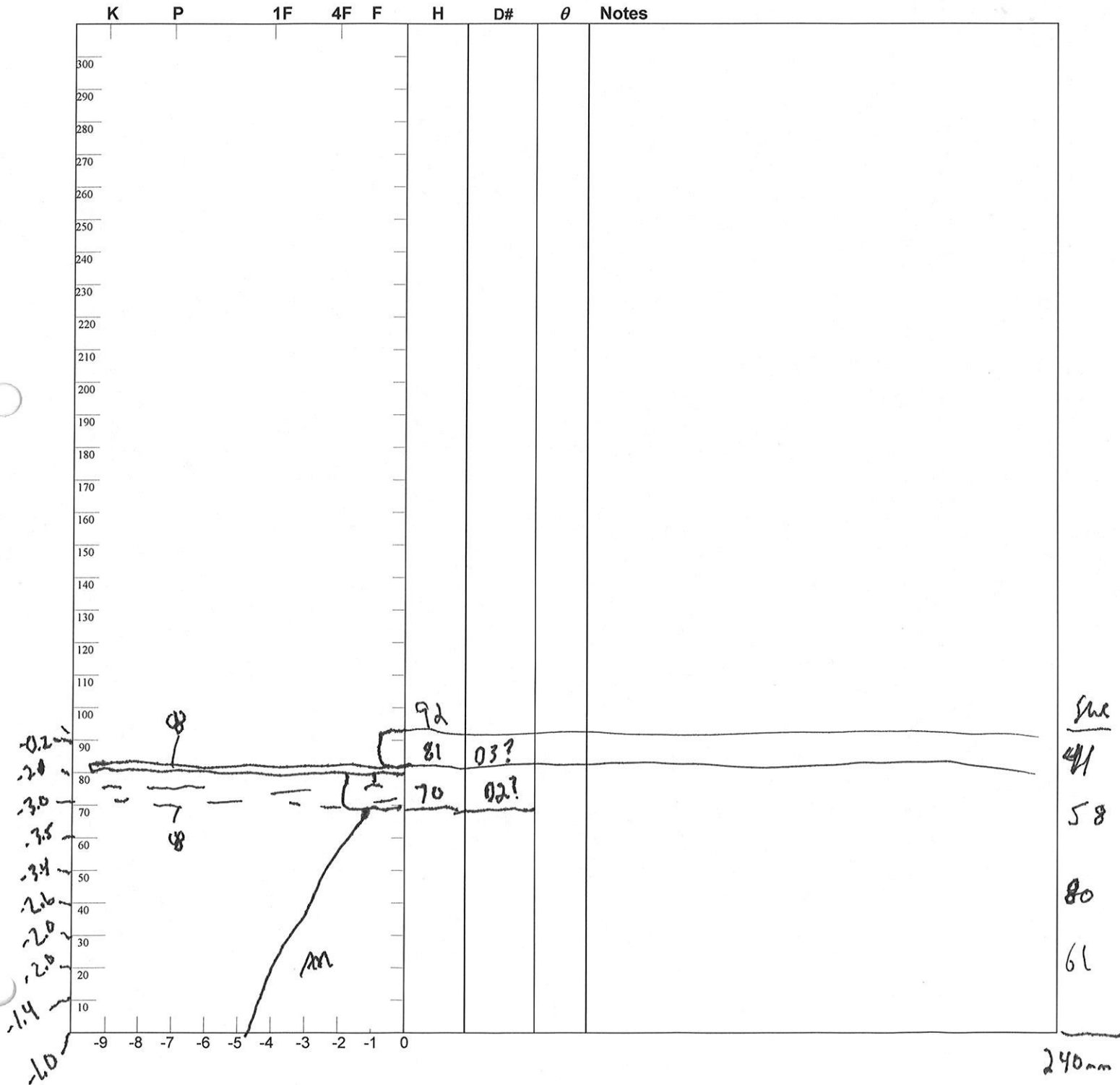
Observers: jed **CODOS Snowpack Profile** Date: 3 14 22  
 Location: Willow Elev. 9,540' Aspect: S Boot Pen: 60 cm  $\angle$ : 2° Time: 1530 MDT  
 Prior Obs: ~~77~~ Air T:      °C Sky: 0 Precip: nil Wind: calm Notes:     

*No dust observed*

$\bar{\rho} = 269 \text{ kg/m}^3$

SWE = 240 mm (9.5")

*slope  $\theta = 0.89 \text{ m}$*





Observers: jet

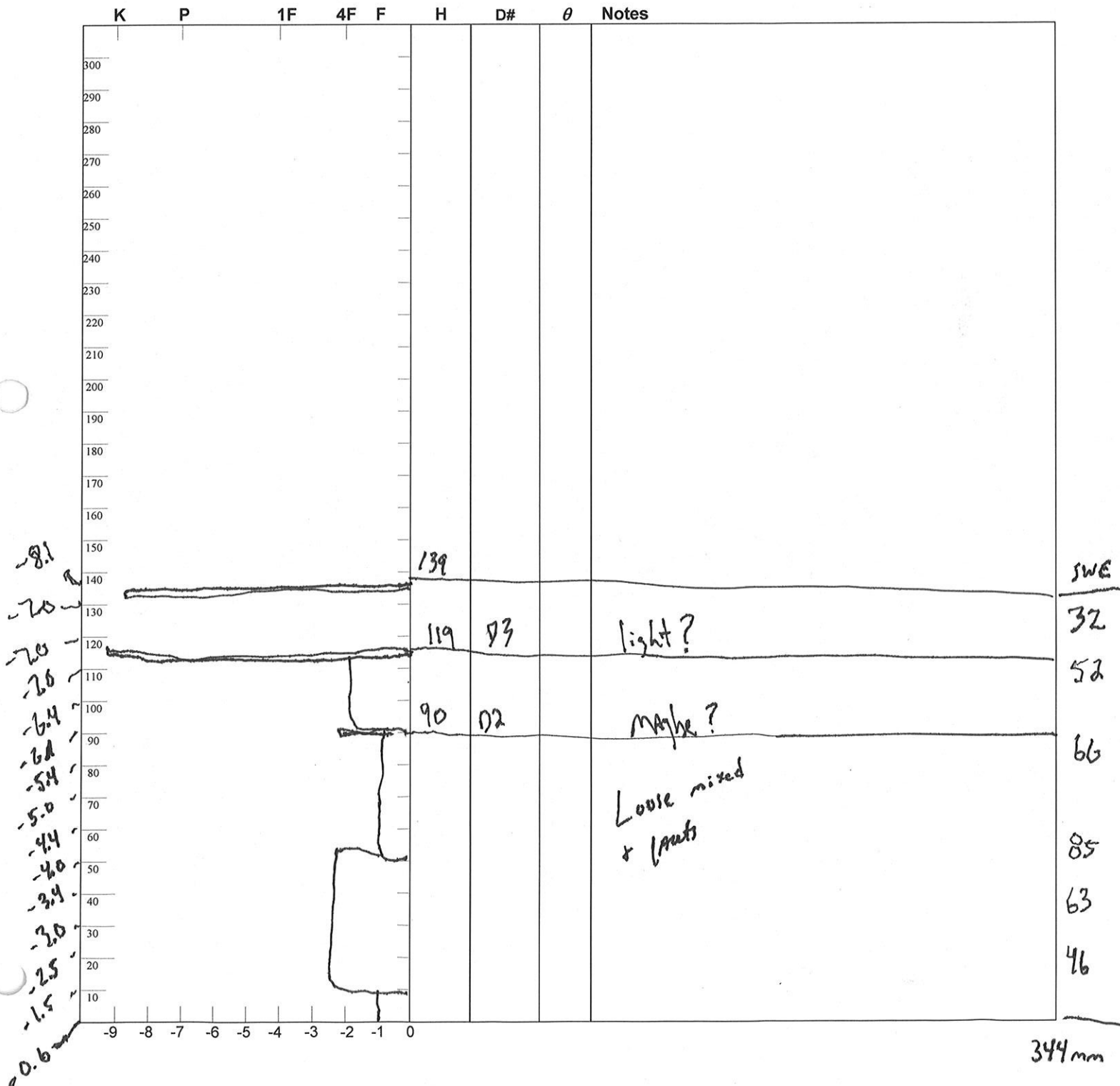
# CODOS Snowpack Profile

Date: 3 / 14 / 22

Location: Larchmont Elev. 11,100' Aspect: E Boot Pen: 70 cm  $\angle$ : 5 ° Time: 1200 MDT

Prior Obs: ~~X~~ Air T:      °C Sky: 0 Precip: nil Wind: calm Notes:     

SWE = 344 mm (13.5")  $\rho = 248 \text{ kg/m}^3$  slope  $\theta = 1.39 \text{ m}$

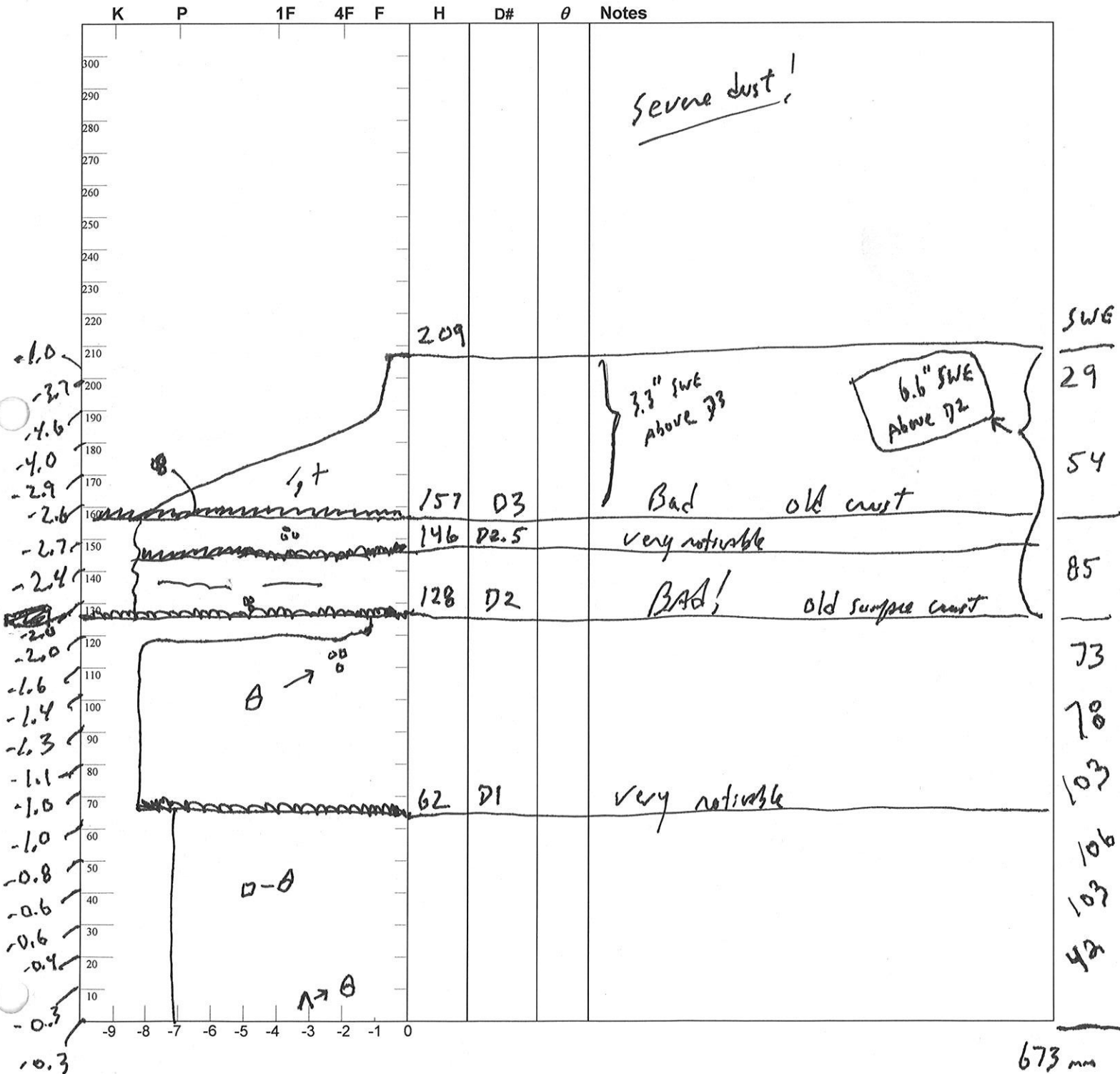




Observers: jed **CODOS Snowpack Profile** Date: 3/12/22  
 Location: Wolf Cr Elev. 11,000' Aspect: SSW Boot Pen: 30 cm  $\angle$ : 3 ° Time: 13:30 MDT  
 Prior Obs: ~~\_\_\_\_\_~~ Air T: \_\_\_\_\_ °C Sky: 0 Precip: nil Wind: calm Notes: \_\_\_\_\_

slope  $\nabla$  = 2.08 m

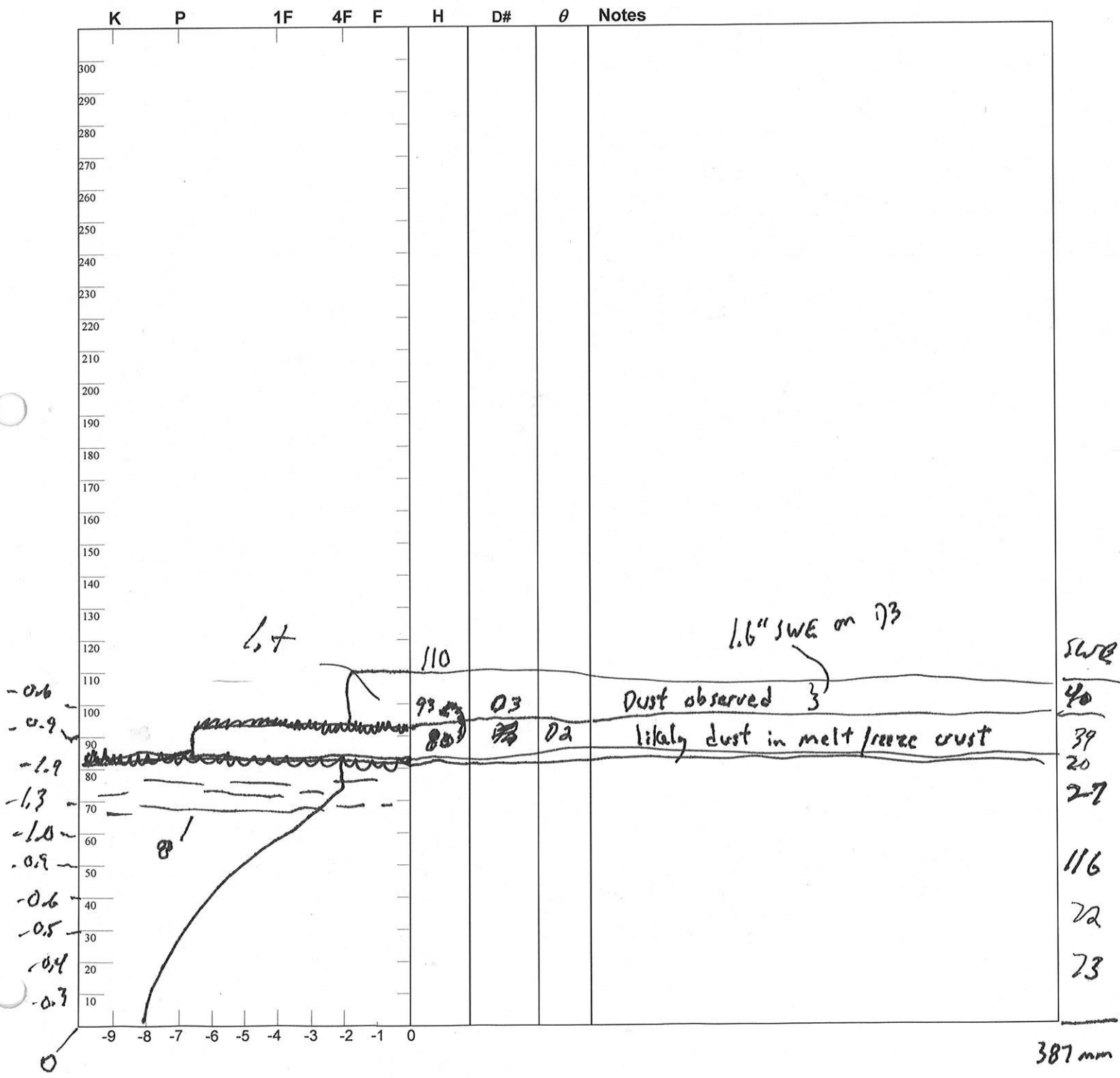
SWE: 673 mm (26.5")  $\rho$ : 324 kg/m<sup>3</sup>



Observers: Jed **CODOS Snowpack Profile** Date: 3 16 22  
 Location: McClure Elev. 9,500' Aspect: N Boot Pen: 50 cm  $\angle$ : 4 ° Time: 1730 MDT  
 Prior Obs: X Air T: \_\_\_ °C Sky: ☉ Precip: 1 SL Wind: mod Notes: \_\_\_\_\_

Dust observed

slope  $\rho = 1.15 \text{ m}$  SWE = 387 mm (15.2")  $\rho = 337 \text{ kg/m}^3$



387 mm