

Observers: Jed

CODOS Snowpack Profile

Date: 4 / 20 / 24

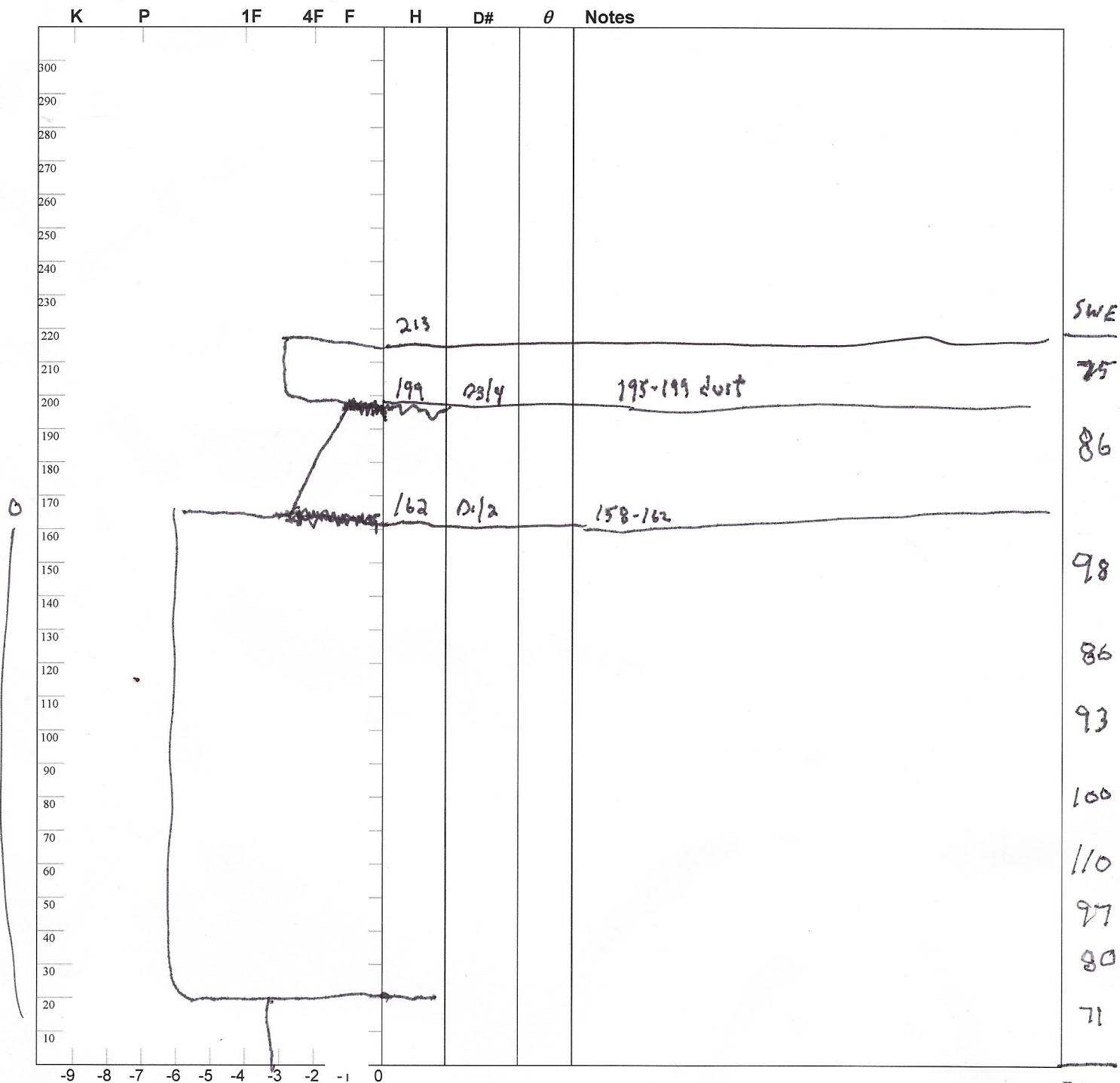
Location: Rabbit Ears Elev. 9,400' Aspect: NW Boot Pen: 5 cm \angle : 3 ° Time: 9:30 MDT

Prior Obs: / / Air T: °C Sky: ☉ Precip: nil Wind: calm Notes:

depth = 2.13 m

$\bar{\rho} = 420 \text{ kg/m}^3$

SWE = 896 mm = 35.3"



896

Observers: JH

CODOS Snowpack Profile

Date: 4 / 17 / 2024

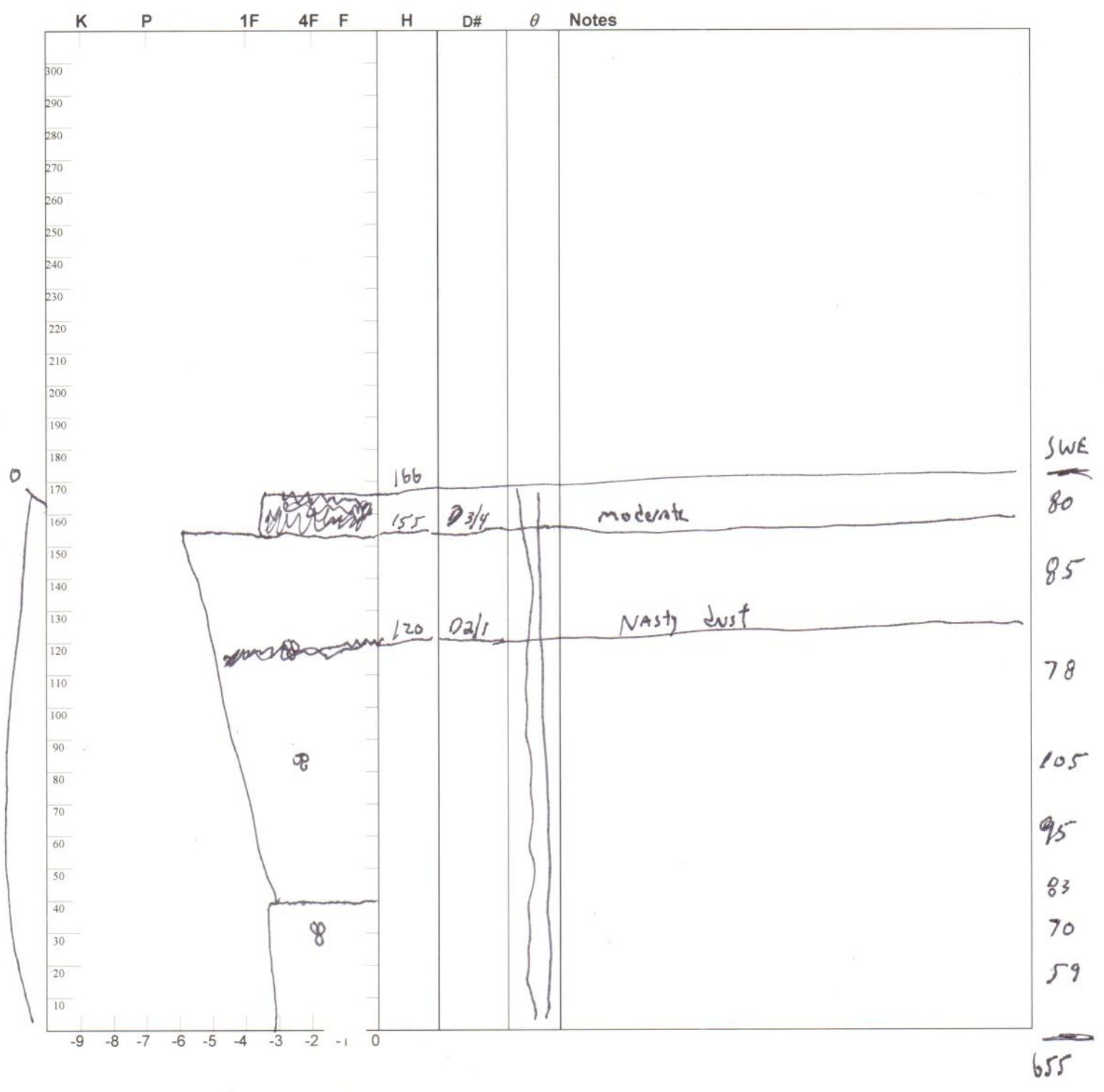
Location: SASP Elev. 11,200' Aspect: NE Boot Pen: 5 cm \angle : 3 ° Time: 1:30 MDT

Prior Obs: / / Air T: °C Sky: 0 Precip: Nil Wind: calm Notes:

slope $\beta = 1.70m$

$\bar{\rho} = 385 \text{ kg/m}^3$

SWE = 655 mm = 25.8"



Observers: AT

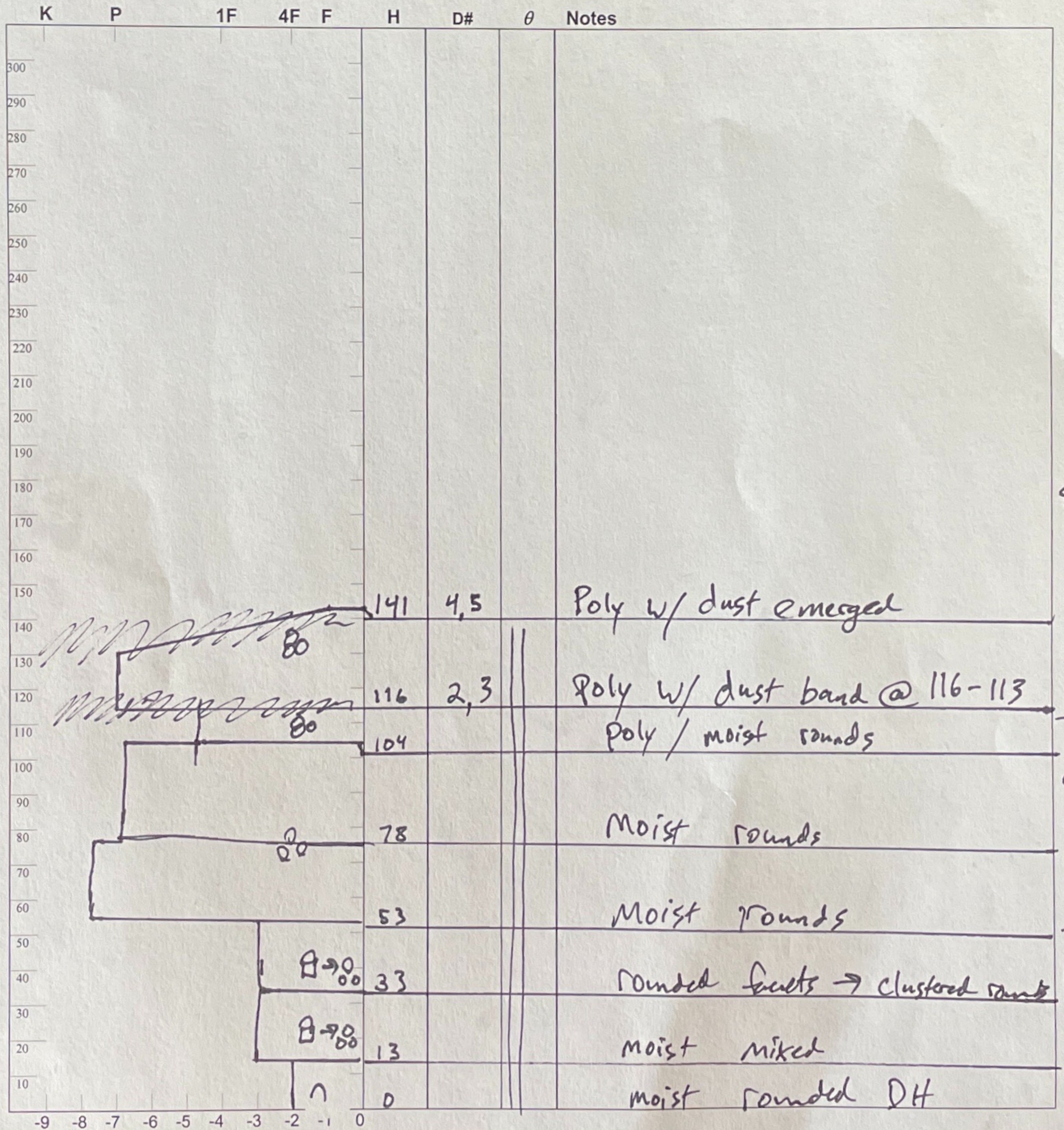
CODOS Snowpack Profile

Date: 4/17/24

Location: GMSP Elev. 10,600' Aspect: NE Boot Pen: 3 cm \angle : 2° Time: 1100 MDT

Prior Obs: / / Air T: 5 °C Sky: ☉ Precip: NO Wind: 13628 Notes:

HS σ = 1.40 M Total SPX SWE = 514 MP = 367 kg/m³



Temp. All 0°C

47
SWE

Observers: AT

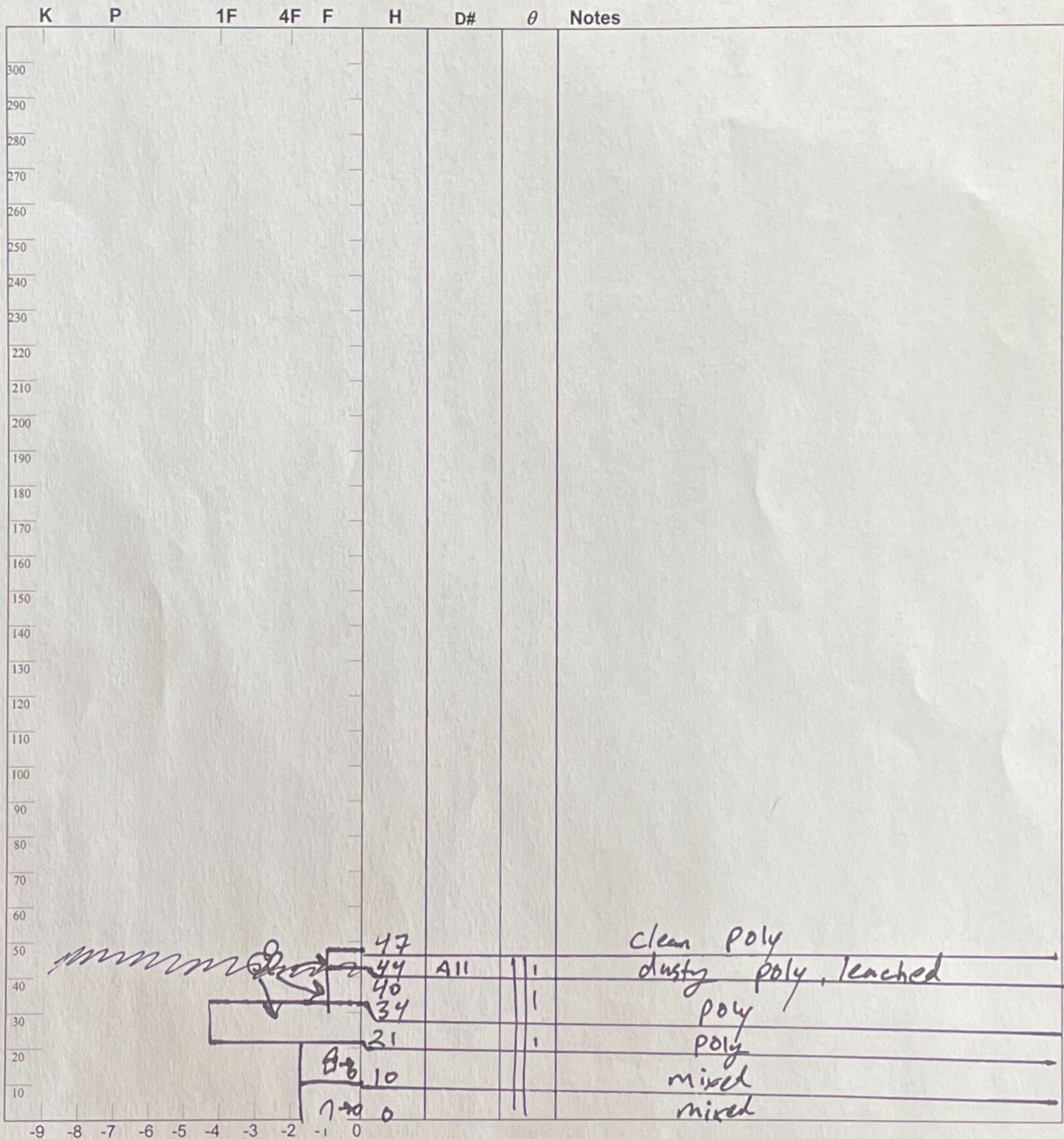
CODOS Snowpack Profile

Date: 4 / 17 / 24

Location: McClellan Pass Elev. 8800' Aspect: SE Boot Pen: 10 cm \angle : 2° Time: 3:30 MDT

Prior Obs: / / Air T: 12 °C Sky: ☉ Precip: NO Wind: 20's Notes:

HS $\rho = 0.58$ Total SPK SWE = 224 mm H₂O $\rho_P = 386$ kg/m³

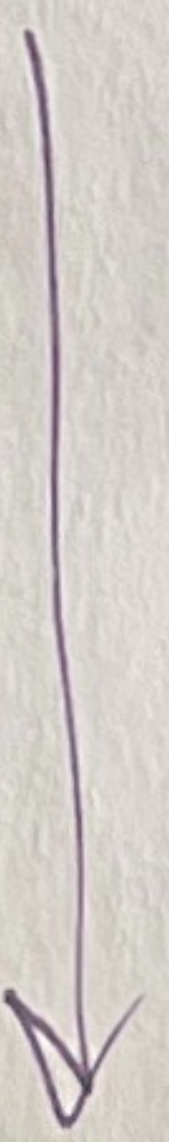


4

SWE

89
—
57
—
78

All
0°C



Observers: AT

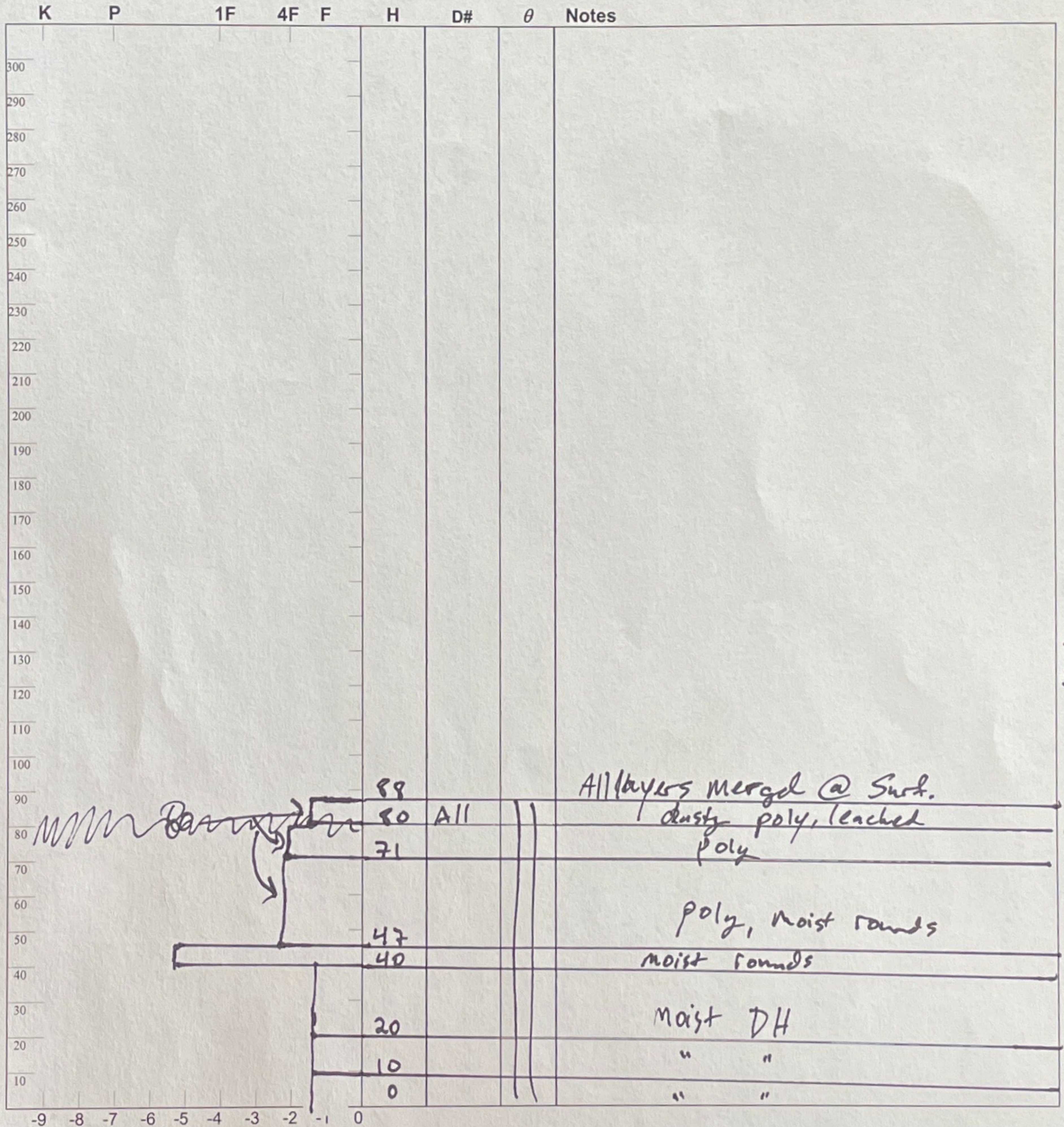
CODOS Snowpack Profile

Date: 4 / 17 / 24

Location: Park Cone Elev. 9600' Aspect: N Boot Pen: 30 cm \angle : 5° Time: 1930 MDT

Prior Obs: / / Air T: °C Sky: ⊙ Precip: NO Wind: LT Notes:

Total SPX SWE = 317 mm H₂O HS & & = 0.89 mp = 356 Kg/m³



♀
♀
SWE

All 0°C
↓

Handwritten scribble

All layers merged @ Surf.
dusty poly, leached

poly, moist rands
moist rands

moist DH

" "

" "

76
78
81
58
24

Observers: AT

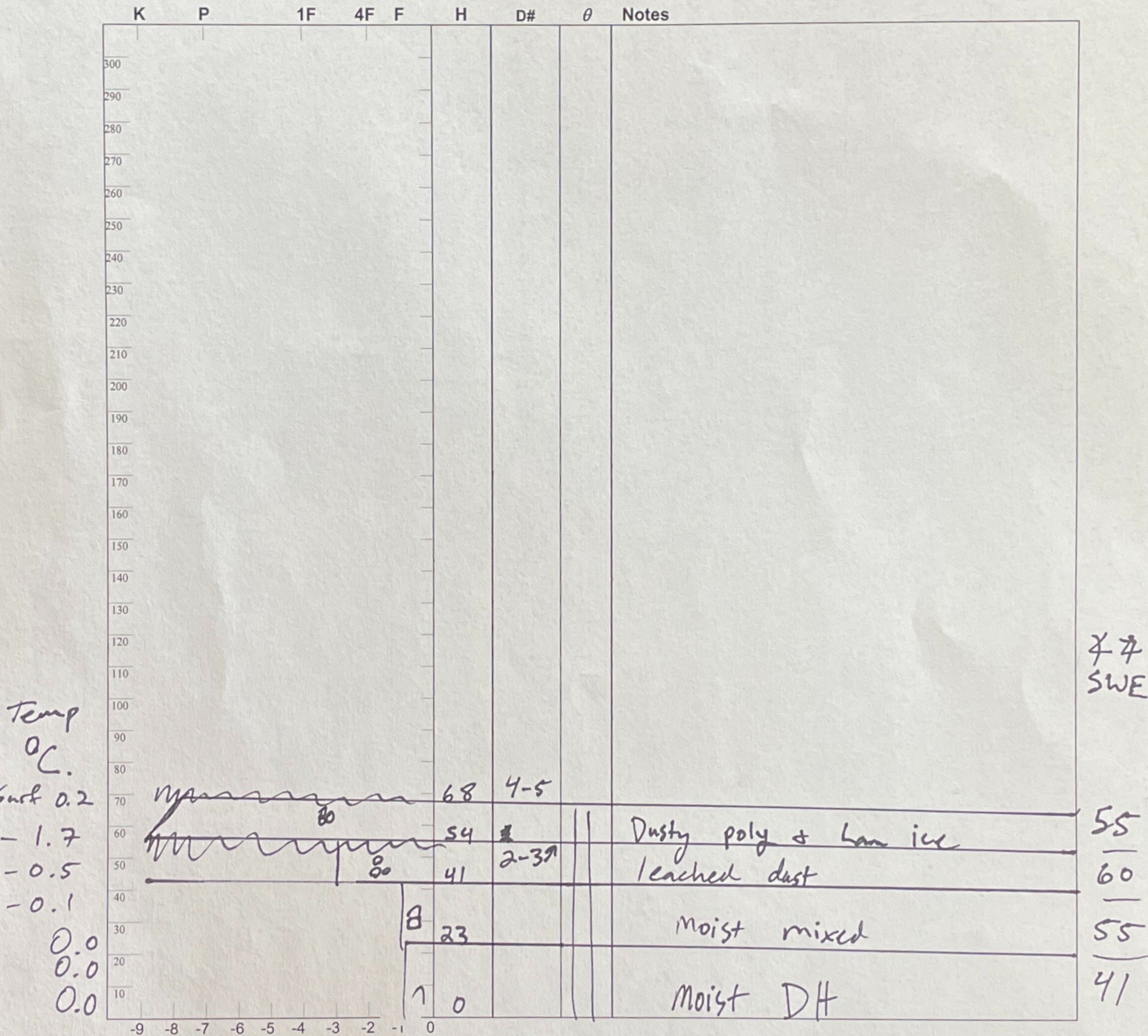
CODOS Snowpack Profile

Date: 4 / 18 / 24

Location: Spring Creek pass Elev. 10,900' Aspect: NE Boot Pen: 2 cm \angle : 4° Time: 0930 MDT

Prior Obs: / / Air T: 3 °C Sky: Ⓚ Precip: NO Wind: Lt. Notes:

Total spx SWE = 211 HS & α = 0.68M $m_p = 310 \text{ kg/m}^3$



Observers: AT

CODOS Snowpack Profile

Date: 4/18/24

Location: Wolf Creek Pass Elev. 10,951' Aspect: SE Boot Pen: 4 cm \angle : 4° Time: 1200 MDT

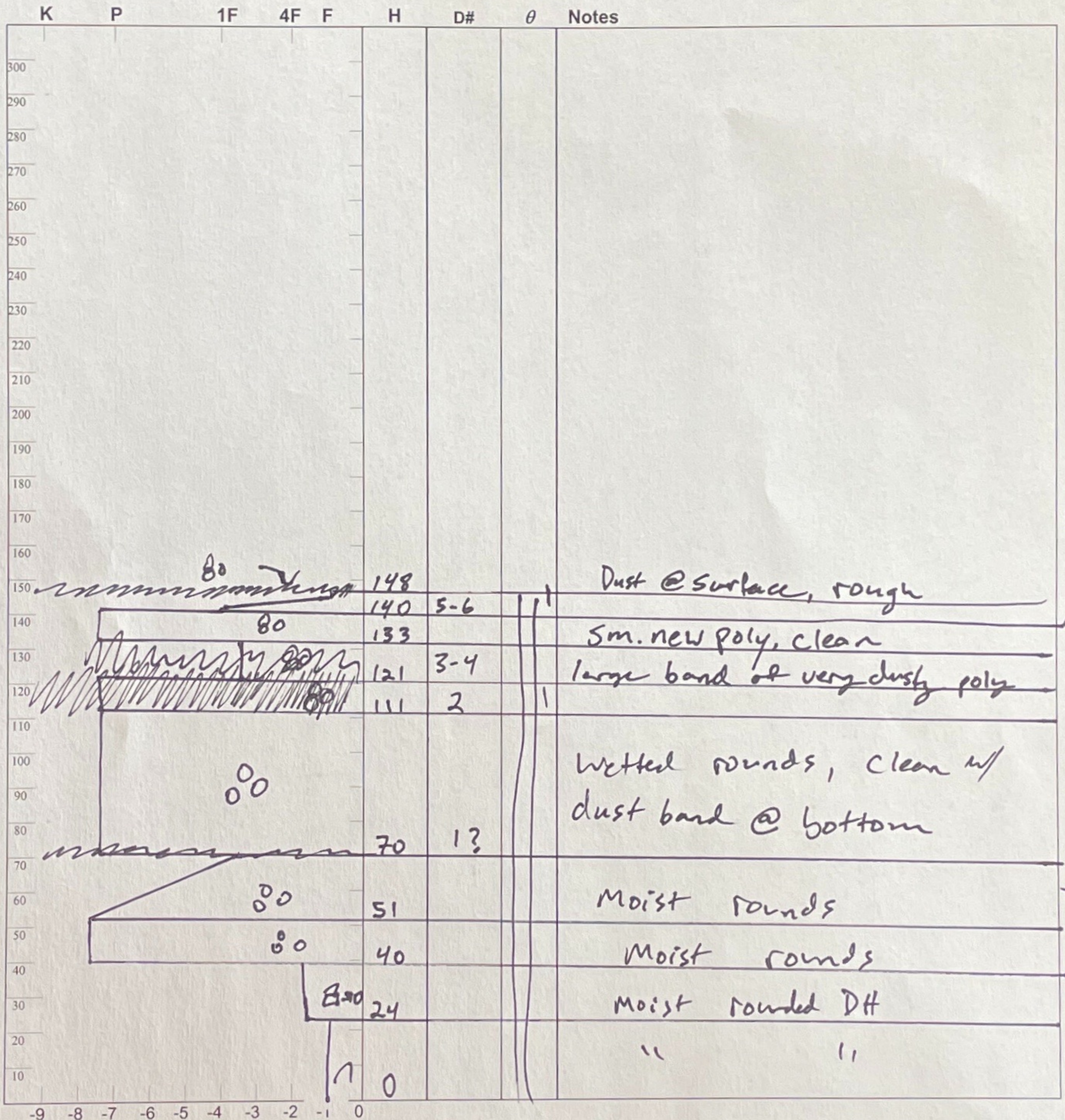
Prior Obs: / / Air T: 7 °C Sky: ☉ Precip: NO Wind: Lt Notes:

Total SPX SWE = 545 mm H₂O HS & H = 1.5 m

$\rho_p = 363 \text{ kg/m}^3$

* Dustiest snowpack of all Southern sites

All 0°C



Handwritten SWE values on the right margin: 64, 72, 88, 70, 83, 84, 84

Observers: jed

CODOS Snowpack Profile

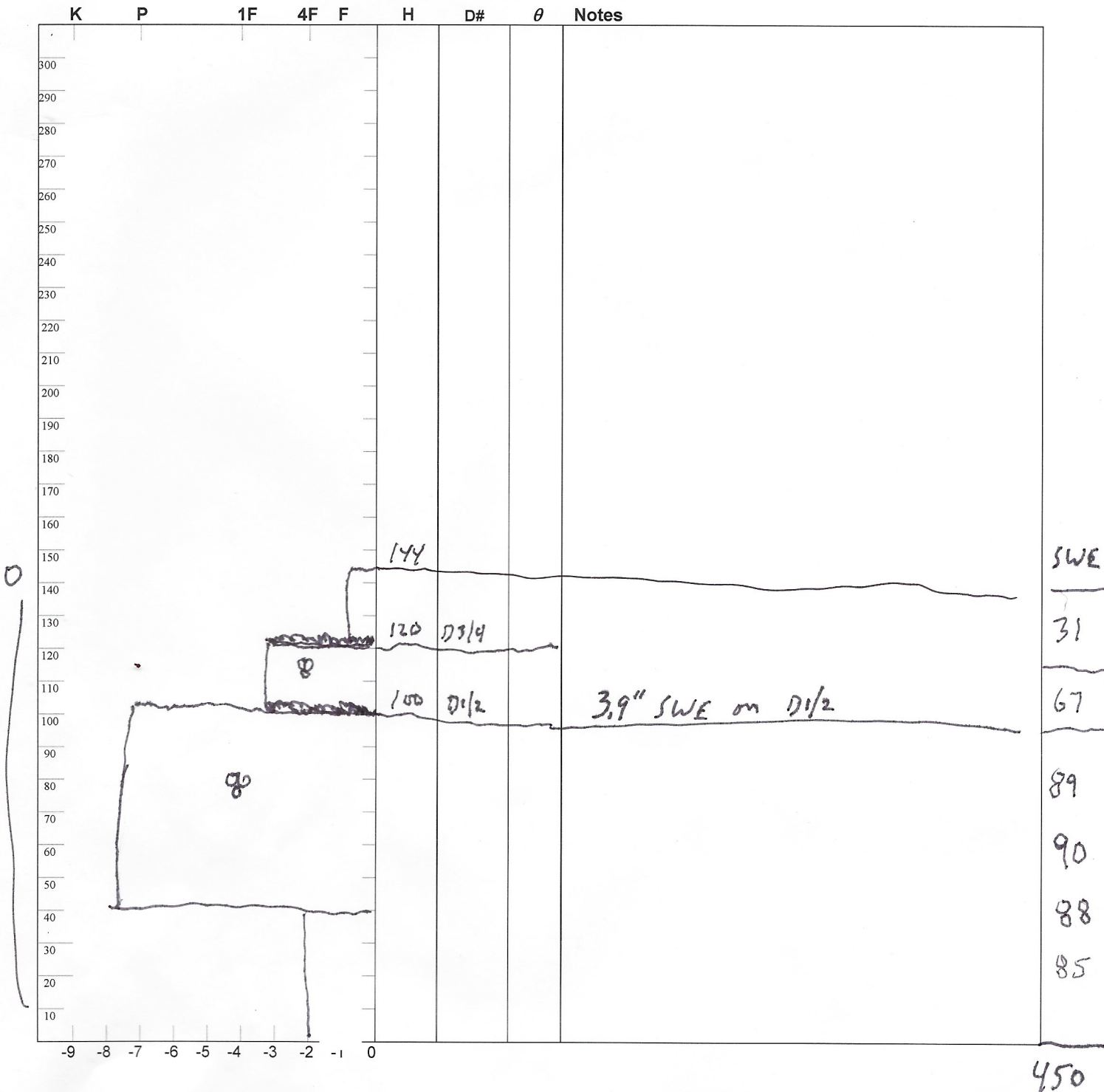
Date: 4 / 19 / 24

Location: Lovekind Elev. 11,100' Aspect: E Boot Pen: 8 cm \angle : 5° Time: 9:30 MDT

Prior Obs: / / Air T: °C Sky: ☉ Precip: nil Wind: nil Notes:

depth 1.44 m $\bar{\rho} = 313 \text{ kg/m}^3$

SWE = 450 mm = 17.7"



450

